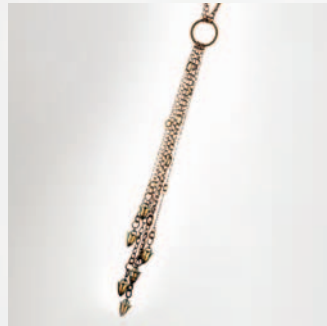


SWAROVSKI

CREATE
YOUR STYLE



CREATE YOUR STYLE
MINI PROJECTS

INNOVATIONS

FALL/WINTER 2014/15



CREATE
YOUR STYLE



SWAROVSKI

MINI PROJECT INNOVATIONS FALL/WINTER 2014/15

NECKLACE BRAVEHEART

Materials

Swarovski crystals

Product Group	Article No.	Amount	Size	Color	Color Code
Buttons	3023	7 pcs.	16x14mm	Crystal Silver Night	001 SINI

Supplies: 28' 8x5mm Brass Cable Chain TierraCast® 20-0625-13
37' 10mm Round Brass Cable Chain TierraCast® 20-0525-13
2 Medium Hammertone Link TierraCast® 94-3086-13
2 Large Hammertone Link TierraCast® 94-3087-13
6 ft 1mm black leather Beadalon® 136U-011

Instructions

- STEP 1: Remove (7) individual links from the 8x5mm brass cable chain and set aside.
- STEP 2: Measure out a 20" piece of the 10mm round brass chain, open the next link past the 20" and remove from the existing chain and close link. The remaining chain should measure about 17". Set aside.
- STEP 3: Measure out 13.5" of the 8x5mm brass cable chain and open the next link past the 13.5" and remove the piece from the rest of the chain and close the link. The remaining chain should measure about 10". Set aside.
- STEP 4: Using the 1mm leather cut into four equal pieces, 18" each.
- STEP 5: Using one piece of leather from step 4 and working only on the left hole of (1) Swarovski Button art. 3023 16x14mm Crystal Silver Night, slip one end of the leather through keeping a 4" tail at the end of the hole. Using a second piece of leather from step 4, slip into the same hole of Button art. 3023 16x14mm Crystal Silver Night, but from the reverse side as before leaving a 4" tail. Note: each leather piece should be exiting the button hole in opposite directions.
- STEP 6: Using the third piece of leather from step 4 and working only on the right hole of the same Button from step 5, slip one end of the leather through the right hole keeping a 4" tail at the end of the hole. Using the fourth piece of leather from step 4, slip leather into the right hole, but from the reverse side as before leaving a 4" tail. Note: Each leather piece should be exiting the Button hole in opposite directions.

Continuation on next page

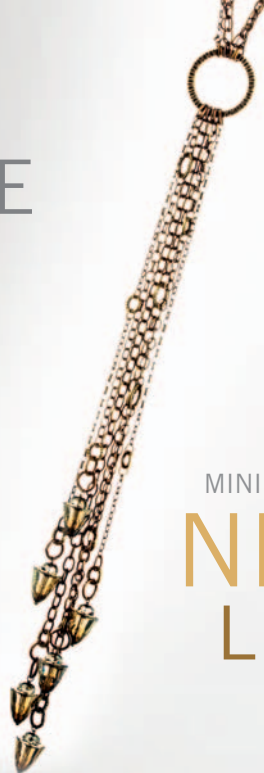
WWW.CREATE-YOUR-STYLE.COM

Necklace "Braveheart", page 2

- STEP 7: Holding the Button in place (4" from the end of the leather), grab all four of the leather on the long side and tie an overhand knot just above the dip in the middle of the heart Button.
- STEP 8: Split the four pieces of leather into two pieces on the right and two pieces on the left. Using one of the two pieces of leather on the left side, slip one piece into the left hole of a second Button art. 3023 16x14 mm Crystal Silver Night. Taking the second leather piece of the left pair, slip into the same hole but from the opposite side. Repeat this step with the right pair of leather pieces using the right hole of the Button. Keeping the Button in place, grab all four pieces of leather and tie an overhand knot just above the dip in the middle of the Button.
- STEP 9: Repeat step 8 adding five more Swarovski Buttons.
- STEP 10: Using the two left leather pieces from the last Button added in step 9, slip on one medium Hammertone ring onto one leather piece. Keeping the two pieces even, tie an overhand knot. Now create an overhand knot onto the same medium Hammertone ring in the same manner using the two right leather pieces. Trim the leather tails.
- STEP 11: Repeat step 10 at the opposite end using a large Hammertone ring.
- STEP 12: Attach the 10" piece of 8x5mm brass cable chain to the medium Hammertone ring from step 10 by opening the last link of chain, attaching to the ring and closing the link. Working from the opposite end, open the last link and attach to a second medium Hammertone ring.
- STEP 13: Using three single chain links created in step one, attach each one to the second medium Hammertone ring from step 12. Before closing each link add to a large Hammertone ring.
- STEP 14: Using one link from step one, attach the 20" piece of 10mm chain to the large Hammertone ring in step 13. Using one link from step one, attach the 17" piece of 10mm chain to the large Hammertone ring to the left of the 20" piece. Attach the 13.5" piece of the 8x5mm brass cable chain to the large Hammertone ring to the left of the other two pieces of chain by opening the last link of the chain attaching to the large Hammertone ring and closing the link.
- STEP 15: Attach one link from step one onto the opposite end of the 20" piece of 10mm cable chain from step 14. Attach one link from step one onto the opposite end of the 17" piece of 10mm cable chain from step 14.
- STEP 16: Attach the two chains from step 15 to the large Hammertone ring at the end of the heart Buttons in order: the 20" chain on the left, the 17" chain in the middle and then attach the 13.5" chain from step 14 to the right side of the large Hammertone ring in the same manner as in step 14.
Note: the chains should layer by shortest to longest.

CREATE
YOUR STYLE

SWAROVSKI



MINI PROJECT INNOVATIONS FALL/WINTER 2014/15

NECKLACE LINKED IN

Materials

Swarovski crystals

Product Group	Article No.	Amount	Size	Color	Color Code
Beads	5040	6 pcs.	8mm	Crystal Bronze Shade	001 BRSH
Beads	5541	6 pcs.	15mm	Crystal Bronze Shade	001 BRSH

Supplies: 32' 4x2.5mm Flattened Brass Cable Chain TierraCast® 20-0125-26
30' 6x4mm Brass Cable Chain TierraCast® 20-0425-27
36' 8x5mm Brass Cable Chain TierraCast® 20-0625-27
2' 10mm Round Brass Cable Chain TierraCast® 20-0525-27
9 Small Hammertone Link TierraCast® 94-3085-27
6 Medium Hammertone Link TierraCast® 94-3086-27
1 1¼" Radiant Link TierraCast® 94-3112-27
12 Oval jump rings 01-0018-27

Instructions

- STEP 1: Remove 12 individual links from the 8x5mm brass cable chain. Attach each link, separately, to the 1.25" radiant link.
- STEP 2: Note: This next step is for making the neck chain. The amounts are based on the sample made, adjust accordingly to fit. Cut two pieces of 4x2.5mm flattened brass cable chain 8' long. Cut two pieces of 6x4mm brass cable chain 8' long. Cut two pieces of 8x5 brass cable chain 8' long.
- STEP 3: Attach one piece of the 4x2.5" cable chain to one of the links in step one. On the opposite side, attach one jump ring to the end of chain and to one side of the toggle clasp. Repeat for the second side of the neck.
Note: the layout of the chain is the outer sides – small, middle – medium and the inner sides – large.
- STEP 4: Attach one piece of the 8x5mm cable chain to one of the links in step one. On the opposite side, attach one jump ring to the end of the chain and to one side of the remaining toggle clasp set. Repeat for the second side of the neck.

[Continuation on next page](#)

WWW.CREATE-YOUR-STYLE.COM

Necklace "Linked In", page 2

- STEP 5: Cut the 6x4 chain made in step 2 into two pieces; one 2" and one 5.5". Open the end link on the 2" piece and attach to a medium Hammertone link. Open the end link on the 5.5" piece and attach to the same medium Hammertone link.
- STEP 6: Using the chain component made in step 5, open an end link and attach to a link from step 2. Open the opposite end link on the chain and attach to one side of the toggle clasp set. Repeat this step for the other side of the neck, same as you did in steps 3 – 4.
Note: the layout of the chain is the outer sides – small, middle – medium and the inner sides – large. This completes the neck portion. If you need to adjust the length, you can add more jump rings from either end. However, if you need to do this step, the count in the supply list will need to be higher.
- STEP 7: Using one head pin, wire-wrap one Swarovski Bead art. 5541 15mm Crystal Bronze Shade (pointed side to end of headpin) and one Bead art. 5040 8mm Crystal Bronze Shade. Repeat five times more and set aside.
- STEP 8: Using the remaining chain, links, Hammertone rings – assemble chain links to your liking. The crystal component made in step 7 will be added to one end of each chain component made. Note: the layout of the chain is the outer sides – small, middle – medium and the inner sides – large. The following is the length of chain components for each dangle. The two outer chains components; 4x2.5mm, measure 8" and 8.5"; the two middle chain components; 6x4mm, measure 7" and 9.5"; the two inner chain components; 8x5mm, measure 10.25" and 11.25".
Note: these measurements do not include the crystal component made in step 7. Note: remember adding the small and medium Hammertone link takes up $\frac{3}{8}$ " and $\frac{1}{2}$ " respectively. You will need to adjust your chain accordingly when you attach the rings and extra links.
- STEP 9: Attach the each chain component to a link created in step 1. Make sure you assemble them in order of your preference.

CREATE
YOUR STYLE



SWAROVSKI

MINI PROJECT INNOVATIONS FALL/WINTER 2014/15

NECKLACE SHADE NOIR

Materials

Swarovski crystals

Product Group	Article No.	Amount	Size	Color	Color Code
Sew-on Stones	3220	20 pcs.	10 mm	Crystal Silver Shade	001 SSH
Sew-on Stones	3220	6 pcs.	20 mm	Crystal Silver Shade	001 SSH
Pendants	6110	20 pcs.	13x6.5 mm	Jet	280

Supplies: 5 Drilled Hammertone Rectangle Link TierraCast® 94-3102-61
1 Hammertone Square Clasps TierraCast® 94-6121-61
1 Hammertone Ellipse Clasp TierraCast® 94-6115-61
20 6 mm Round jump rings TierraCast® 01-0024-01
7 ft 1 mm black leather Beadalon® 136U-011

Instructions

- STEP 1: Using the 1 mm leather, cut 2 pieces 12" long and 10 pieces 6" long. Set aside.
- STEP 2: Beginning with Swarovski Sew-on Stone art. 3220 20mm Crystal Silver Shade, lay out on your bead board the Sew-on Stone art. 3220 20mm Crystal Silver Shade and then the Hammertone rectangle links, alternating them until you have 11 pieces laid out.
- STEP 3: Using one piece of 6" leather, slip one end of the leather through one hole of Sew-on Stone art. 3220 20mm Crystal Silver Shade and the other end of the leather through the hole of the Hammertone rectangle link. Leaving about a 10mm space between the components and keeping the leather tails together, tie an overhand knot.
Note: Keep the knot tight against the Hammertone link hole. The leather loop connecting the two components should be about 10mm on both sides of the piece for a total loop size of 20mm. DO NOT TRIM THE LEATHER TAILS AT THIS TIME.

Continuation on next page

WWW.CREATE-YOUR-STYLE.COM

Necklace “Shade Noir”, page 2

- STEP 4: Using another piece of 6” leather, slip one end of the leather through the opposite hole of the Hammertone link used in step 3. Picking up a second Sew-on Stone art. 3220 20mm Crystal Silver Shade, slip the other end of the leather through one hole of this sew on stone. Leaving about a 10mm space between the components and keeping the leather tails together, tie an overhand knot.
Note: Keep the knot tight against the Sew-on Stone hole. The leather loop connecting the two components should be about 10mm on both sides of the piece for a total loop size of 20mm. DO NOT TRIM THE LEATHER TAILS AT THIS TIME.
- STEP 5: Continue in this manner until all Sew-on Stones art. 3223 20mm Crystal Silver Shade and all Hammertone links are connected ending with the Sew-on Stones art. 3223 20mm.
- STEP 6: Using (1) Swarovski Sew-on Stone art. 3223 10mm Crystal Silver Shade, slip one leather tail (hanging from the connection between the Sew-on Stone and the Hammertone rectangle) through one hole on the Sew-on Stone. Slide the Sew-on Stone away from the end of the leather and tie an overhand knot.
Note: Tie the knot in the position along the leather where you would like the Sew-on Stone to sit. Continue adding (1) Swarovski Sew-on Stone art. 3223 10mm Crystal Silver Shade to each leather tail in the same manner. You should now have attached all 20 sew-on dangles.
- STEP 7: Open (1) 6mm jump ring and attach to (1) Swarovski Pendant art. 6110 13.5x6.5mm Jet. While the jump ring is still open, attach to the second hole on the first Swarovski Sew-on Stone art. 3223 10mm Crystal Silver Shade added in step 6. Close the jump ring. Continue in this manner and attach the remaining 19 Pendants art. 6110 13.5x6.5mm Jet.
Note: The dangles may hang slightly stiff, but the leather will soften up with wear.
- STEP 8: Using one piece of 12” leather, fold in half and attach to the remaining hole on Sew-on Stone art. 3223 20mm Crystal Silver Shade on one side of the necklace. Keeping the tails together, tie an overhand knot right up against the hole. Keeping both ends of the leather together, slip the leather through the hole of the hammered toggle piece. Line up the toggle on the leather to the desired length and tie an overhand knot which keeps the toggle piece in place.
- STEP 9: Repeat step 8 for the opposite side using the bar closure of the toggle set.
- STEP 10: After making sure all of the overhand knots are securely tightened, nip the leather tails that extend beyond the overhand knots to the desired length. Repeat for each tail.

CREATE
YOUR STYLE

SWAROVSKI



MINI PROJECT INNOVATIONS FALL/WINTER 2014/15

NECKLACE THE RING OF KERRY

Materials

Swarovski crystals

Product Group	Article No.	Amount	Size	Color	Color Code
Sew-on Stones	3220	11 pcs.	10 mm	Dark Moss Green	260
Pendants	6628	1 pc.	8 mm	Dark Moss Green	260
Pendants	6764	1 pc.	28 mm	Dark Moss Green	260

Supplies: 20' 9x6 Embossed Brass Cable Chain TierraCast® 20-0325-27
2 Medium Hammertone Link TierraCast® 94-3086-27
11 Large Hammertone Link TierraCast® 94-3087-27
2 6mm Oval Jump Rings TierraCast® 01-0018-27
1 Small Hammertone Pinch Bail TierraCast® 94-5779-27
1 Large Classic Hook TierraCast® 94-6178-27

Instructions

- STEP 1: Using Hammertone pinch bail slide on one medium Hammertone link and attach to one Swarovski Pendant art. 6764 28mm Dark Moss Green and set aside.
- STEP 2: Using the brass chain detach 46 separate links and set aside.
- STEP 3: Using one medium Hammertone link attach 2' of cable chain.
- STEP 4: Using two of the loose links attach to last link in chain, then attach one loose link through one large Hammertone link and one Swarovski Sew-on Stone art. 3220 10mm Dark Moss Green. Using second hole in the Sew-on Stone and other side of large Hammertone link attach one more loose link and close. Repeat this step 10 more times.
- STEP 5: Attach 2' of cable chain to the last double links. Attach the large classic hook to the end and drop off the one Pendant art. 6628 8mm Dark Moss Green using two 6mm oval jump rings.
- STEP 6: Using the component made in step 1 attach to the center large Hammertone link using two loose links.

CREATE
YOUR STYLE

SWAROVSKI



MINI PROJECT INNOVATIONS FALL/WINTER 2014/15

NECKLACE 007

Materials

Swarovski crystals

Product Group	Article No.	Amount	Size	Color	Color Code
Beads	5542	4 pcs.	8mm	Crystal	001
Beads	5542	3 pcs.	11 mm	Crystal	001

Supplies: 7 Medium Hammertone Link TierraCast® 94-3086-13
1 Large Tapered Clasp TierraCast® 94-6067-13
44 8mm Round jump Rings TierraCast® 01-0020-13

7 Large Hammertone Link TierraCast® 94-3087-13
7 Rectangle Hammertone Button TierraCast® 94-6561-13
7 2" Head Pins TierraCast® 01-0028-13

Instructions

- STEP 1: Using one headpin slide on one Swarovski Bead art. 5542 8mm Crystal point side up. Wire wrap to close and set aside. Repeat 3 more times.
- STEP 2: Using one headpin slide on one Bead art. 5542 11 mm Crystal point side up. Wire wrap to close and set aside. Repeat 2 more times.
- STEP 3: To make the button linked bracelet begin by linking two jump rings to a third jump ring. Then capture the two loose jump rings with one more jump ring and attach this last jump ring to one hole in the rectangle Hammertone button. Starting with the second hole in the button repeat the jump ring pattern linking together the other 6 buttons.
- STEP 4: Looking to the left side of the bracelet and using the section with the double jump ring section link on the following with additional jump rings: one medium Hammertone link, one Bead created in step 1, and one large Hammertone link.
- STEP 5: Moving to the next section with double jump rings link on the following with additional jump rings: one medium Hammertone link, one Bead created in step 2, and one large Hammertone link.
- STEP 6: Repeat steps 4 and 5 until all Beads and links are attached.
- STEP 7: Attach toggle and ring to either side of the bracelet to finish with jump rings.



MINI PROJECT INNOVATIONS FALL/WINTER 2014/15

BRACELET

MOSS BEACH

Materials

Swarovski crystals

Product Group	Article No.	Amount	Size	Color	Color Code
Beads	5328	34 pcs.	4 mm	Dark Moss Green AB	260 AB
Pendants	6628	102 pcs.	8 mm	Dark Moss Green	260
Buttons	1811/100	1 pc.	12 mm	Palace Green Opal	393

Supplies: 68 3 mm Disk Beads TierraCast® 93-0439-11
 20 Sterling Silver 2mm Round Bead TierraCast® 93-0102-00
 2 2x2 crimp beads TierraCast® 01-0030-09
 2 3 mm crimp covers TierraCast® 01-0032-09
 24" Beadalon® .018 stringing wire

Instructions

- STEP 1: Attach Swarovski Button art. 1811/100 12mm Palace Green Opal to one end of beading wire. Crimp to close and attach crimp bead.
- STEP 2: String on one Swarovski Bead art. 5328 4mm Dark Moss Green AB, one Disk Bead, 5 Swarovski Pendants art. 6628 8mm Dark Moss Green.
- STEP 3: String on one disk bead, one Bead art. 5328 4mm Dark Moss Green AB, one disk bead, 3 Pendants art. 6628 8mm Dark Moss Green, one disk bead, one Bead art. 5328 4mm Dark Moss Green AB, one disk bead, 1 Pendant art. 6628 8mm Dark Moss Green, one disk bead, one Bead art. 5328 4mm Dark Moss Green AB, one disk bead, 3 Pendants art. 6628 8mm Dark Moss Green, one disk bead, one Bead art. 5328 4mm Dark Moss Green AB, one disk bead, and 5 Pendants art. 6628 8mm Dark Moss Green. Repeat this pattern 7 more times. String on one disk bead and one Bead art. 5328 4mm Dark Moss Green AB.
- STEP 4: String on one crimp bead and 20 sterling silver beads. To make the toggle slide the beading wire back through the crimp bead and crimp to close. Attach crimp cover to finish.

CREATE
YOUR STYLE

SWAROVSKI



MINI PROJECT INNOVATIONS FALL/WINTER 2014/15

EARRINGS

BERMUDA TRIANGLE

Materials

Swarovski crystals

Product Group	Article No.	Amount	Size	Color	Color Code
Pendants	6628	8 pcs.	8mm	Crystal Bermuda Blue P	001 BBL
Pendants	6628	4 pcs.	12mm	Crystal Bermuda Blue P	001 BBL
Pendants	6628	2 pcs.	16mm	Crystal Bermuda Blue P	001 BBL

Supplies: 9' small cable chain – 2mm links
2 Royal Pinch Bail TierraCast® 94-5778-13
2 5 Hole D Ring Link TierraCast® 94-6174-13

1 pair Niobium Earwires TierraCast® 90-5179-01
26 6mm Oval Jump Rings TierraCast® 01-0018-13

Instructions

- STEP 1: Cut 4 pieces of chain, 1" long. Cut 2 pieces of chain 2.5" long. Set aside.
- STEP 2: Attach (1) Royal Pinch Bail to (1) Swarovski Pendant art. 6628 16mm Crystal Bermuda Blue. Repeat for second Pendant. Set aside.
- STEP 3: Attach (1) jump ring to (1) Pendant art. 6628 12mm Crystal Bermuda Blue and to (1) piece of 1" cable chain. Attach (1) ring to the other. Repeat 3 times more. Set aside.
- STEP 4: Using the component made in step 3, attach (1) jump ring to the end of the chain and to the 1st hole of the 5-hole D Ring Link. Repeat this step for the 5th hole of the 5-hole D Ring Link.
Note: make sure the right side of the Swarovski Pendants face the same direction.
- STEP 5: Using one piece of 2.5" long chain from step 1, slip the chain through the bail of the component made in step 2. Attach one jump ring to each end of the chain. Open one of the attached jump rings and attach it to the 2nd hole of the 5-hole D Ring Link. Open the second attached jump ring and attach it to the 4th hole of the 5-hole D Ring Link making sure the pendant does not fall off the chain.
Note: make sure the right side of the Pendants face the same direction.

Continuation on next page

WWW.CREATE-YOUR-STYLE.COM

Earrings "Bermuda Triangle", page 2

- STEP 6: Attach (1) jump ring to the second link of chain on EACH chain suspended from the 2nd and 4th hole of the 5-hole D Ring Link.
Note: It will appear that both sides of the chain are gathered together.
- STEP 7: Link three more jump rings to the jump ring in step 6.
- STEP 8: Open the last jump ring of the four ring group and add (1) Swarovski Pendant art. 6628 8mm Crystal Bermuda Blue.
Note: Make sure the right side of the Pendants face the same direction.
- STEP 9: Open the second jump ring in the four ring chain from step 7 (making sure you do not unlink the chain), add (1) Swarovski Pendant art. 6628 8mm Crystal Bermuda Blue.
Note: Make sure the right side of the Pendants face the same direction.
- STEP 10: Open (1) jump ring and attach (1) Pendant art. 6628 8mm Crystal Bermuda Blue. Slip the ring (with Pendant) onto the 3rd hole of the 5-hole D Ring Link.
Note: Make sure the right side of the Pendants face the same direction.
- STEP 11: Attach an earwire to the arch on the top of the 5-hole D Ring Link.
- STEP 12: Attach (1) jump ring to (1) Pendant art. 6628 8mm Crystal Bermuda Blue. Close ring. Attach (1) more jump to the component just made and to the bottom of the earwire loop. Close ring. Note: Make sure the right side of the Pendants face the same direction. You should have 4 Pendants art. 6628 8mm Crystal Bermuda Blue hanging in a row vertically.
- STEP 13: Repeat steps 3 – 12 for the second pair.

CREATE
YOUR STYLE

SWAROVSKI



MINI PROJECT INNOVATIONS FALL/WINTER 2014/15

EARRINGS THE CITY

Materials

Swarovski crystals

Product Group	Article No.	Amount	Size	Color	Color Code
Pendants	6696	2 pcs.	20mm	Crystal Lilac Shadow	001 LIS

Supplies: 4' 2mm small cable chain
1 pair Niobium Earwires TierraCast® 90-5178-01
2 Small Hammertone Pinch Bail TierraCast® 94-5779-27
2 Medium Hammertone Link TierraCast® 94-3086-27
2' 9x6mm Embossed Brass Cable Chain TierraCast® 20-0325-27

Instructions

- STEP 1: Cut chain into two 2' pieces and set aside.
- STEP 2: Using the brass chain detach 6 separate links and set aside.
- STEP 3: Using one Hammertone pinch bail slide on one medium Hammertone link and attach to one Swarovski Pendant art. 6696 20mm Crystal Lilac Shadow.
- STEP 4: Attach 3 of the loose links separately to the medium Hammertone link.
- STEP 5: Slide one piece of chain through the 3 loose links and attach up onto one ear wire.
- STEP 6: Repeat steps 3 – 5 to make second earring.

CREATE
YOUR STYLE

SWAROVSKI



MINI PROJECT INNOVATIONS FALL/WINTER 2014/15

NECKLACE

LILAC SPLENDOR

Materials

Swarovski crystals

Product Group	Article No.	Amount	Size	Color	Color Code
Beads	5000	18 pcs.	10 mm	Crystal Lilac Shadow	001 LISH
Beads	5028/4	51 pcs.	6 mm	Crystal Golden Shadow	001 GSHA
Beads	5051	36 pcs.	8x6 mm	Amethyst	204
Beads	5328	114 pcs.	3 mm	Crystal Golden Shadow	001 GSHA
Beads	5328	75 pcs.	4 mm	Crystal Lilac Shadow	001 LISH
Beads	5328	75 pcs.	4 mm	Cyclamen Opal	398
Beads	5541	6 pcs.	15 mm	Crystal Lilac Shadow	001 LISH
Beads	5621	2 pcs.	22 mm	Crystal Golden Shadow	001 GSHA
Filigrees	62022	8 pcs.		Amethyst/Lt Amethyst/ Cyclamen Opal	204/212/398

Supplies: 1 5/8" Anna's Clasp TierraCast® 94-6157-12
6 4 mm Crimp Covers
22" 20 gauge Silver Artistic Wire®

6 3x3 Crimp Beads
120" Beadalon® .018 stringing wire
Scotch Tape

Instructions

- STEP 1: Cut stringing wire into 15 8" pieces and set aside. Cut 20 gauge wire into 18 1" pieces and 2 2" pieces and set aside.
- STEP 2: Using a 1" piece of 20 gauge wire make a simple loop at one end, slide on one Swarovski Bead art. 5000 10mm Crystal Lilac Shadow and make a simple loop. Repeat 17 more times and set aside.
- STEP 3: Using a 2" piece of 20 gauge wire make a simple loop at one end, slide on one Bead art. 5621 22mm Crystal Golden Shadow and make a simple loop. Repeat 1 more time and set aside.

Continuation on next page

WWW.CREATE-YOUR-STYLE.COM

Necklace "Lilac Splendor", page 2

- STEP 4: Using components made in step 2 link 5 units together.
- STEP 5: Using 5 strands of stringing wire slip on one 3x3 crimp bead and slide all 5 strands through the last unit from Step 4. Crimp to close and attach crimp cover. Slide all 5 strands through one Swarovski Bead art. 5541 15mm Crystal Lilac Shadow (point end first).
- STEP 6: Taking first piece of stringing wire slide on 25 Swarovski Beads art. 5328 4mm Cyclamen Opal and attach Scotch tape to secure. Taking second piece of stringing wire slide on 25 Beads art. 5328 4mm Crystal Lilac Shadow and attach Scotch tape to secure. Taking third piece of stringing wire slide on 38 Beads art. 5328 3mm Crystal Golden Shadow and attach Scotch tape to secure. Taking fourth piece of stringing wire slide on 17 Beads art. 5028/4 6mm Crystal Golden Shadow and attach Scotch tape to secure. Taking fifth piece of stringing wire slide on 12 Beads art. 5051 8x6mm Amethyst and attach Scotch tape to secure.
- STEP 7: Lay all 5 strands out separately and begin to randomly braid them together. Remove the tape carefully and slide all 5 strands through one Swarovski Bead art. 5541 15mm Crystal Lilac Shadow (concave end first). Pull each end taught. Slip all 5 strands through a 3x3 crimp bead and slide through a component made in step 2 and crimp to close. Attach crimp cover.
- STEP 8: Attach two Swarovski Filigrees art. 62022 back to back. On opposite end of Filigree attach another component made in step 2. Attach component made in step 3. Attach component made in step 2. Attach two Filigrees art. 62022 back to back. And attach one component made in step 2.
- STEP 9: Repeat steps 5 – 8 once.
- STEP 10: Repeat steps 5 – 7 once.
- STEP 11: Using components made in step 2 continue to link 4 units together.
- STEP 12: Attach Anna's Clasp to each end of the necklace.

CREATE
YOUR STYLE

SWAROVSKI



MINI PROJECT INNOVATIONS FALL/WINTER 2014/15

NECKLACE & EARRINGS BERRY PATCH

Materials

Swarovski crystals

Product Group	Article No.	Amount	Size	Color	Color Code
Round Stones	1122	3 pcs.	14 mm	Amethyst	208
Round Stones	1122	9 pcs.	18 mm	Amethyst	208
Beads	5328	24 pcs.	4 mm	Crystal Lilac Shadow	001 LISH
Crystal Pearls	5860	2 pcs.	10 mm	Crystal Blackberry Pearl	001 784
Crystal Pearls	5860	8 pcs.	14 mm	Crystal Blackberry Pearl	001 784

Supplies: 3 14 mm Faceted Drop Rivoli Frame TierraCast® 94-2367-27
9 18 mm Faceted Link Rivoli Frame TierraCast® 94-3155-27
1 Large Classic Hook TierraCast® 94-6178-27
3' 9x6 Embossed Brass Cable Chain TierraCast® 20-0325-27
1 pair Niobium Earwires TierraCast® 90-5178-01
25' 20 gauge Bronze Artistic Wire®
2 part epoxy

Instructions

- STEP 1: Take one Swarovski Round Stone art. 1122 18mm Amethyst and one 18mm faceted link rivoli frame and using the 2 part epoxy glue in the crystal. Repeat 8 more times and set aside for 24 hours to set.
- STEP 2: Take one Round Stone art. 1122 14mm Amethyst and one 14mm faceted drop rivoli frame and using the 2 part epoxy glue in the crystal. Repeat 2 more times and set aside for 24 hours to set.
- STEP 3: Cut the 20 gauge wire into 10 2.5" pieces and set aside.

Continuation on next page

WWW.CREATE-YOUR-STYLE.COM

Necklace & Earrings “Berry Patch”, page 2

- STEP 4: Using one piece of wire make a simple loop at one end. Slide on one Swarovski Bead art. 5328 4 mm Crystal Lilac Shadow, one Crystal Pearl art. 5860 14mm Crystal Blackberry Pearl, and one Bead art. 5328 4 mm Crystal Lilac Shadow. Make a simple loop to close. Repeat this step 7 more times and set aside.
- STEP 5: Using one piece of wire make a simple loop at one end. Slide on one Bead art. 5328 4 mm Crystal Lilac Shadow, one Crystal Pearl art. 5860 10mm Crystal Blackberry Pearl, and one Bead art. 5328 4 mm Crystal Lilac Shadow. Make a simple loop to close. Repeat this step 1 more time and set aside.

TO MAKE NECKLACE:

- STEP 6: Using one link made in step 4 attach to one link made in step 1. Repeat this pattern 6 more times ending it with one last link made in step 4.
- STEP 7: Attach to one end of the necklace the large classic hook.
- STEP 8: Using the 3” of cable chain attach a link made in step 2 to one end of chain and attach the other end to the necklace to complete.

TO MAKE EARRINGS:

- STEP 9: Using the link made in step 5 attach one end to link made in step 1 and other end to link made in step 2. Attach ear wire. Repeat to make second earring.

CREATE
YOUR STYLE



SWAROVSKI

MINI PROJECT INNOVATIONS FALL/WINTER 2014/15

NECKLACE

SHADOWS IN THE MIST

Materials

Swarovski crystals

Product Group	Article No.	Amount	Size	Color	Color Code
Round Stones	1088	40 pcs.	PP21	Crystal Lilac Shadow F	001 LISH
Round Stones	1088	200 pcs.	PP21	Crystal Silver Night F	001 SINI
Beads	5541	6 pcs.	11 mm	Crystal	001
Beads	5541	6 pcs.	15 mm	Crystal	001
Beads	5541	6 pcs.	15 mm	Crystal Lilac Shadow	001 LISH
Beads	5542	4 pcs.	8 mm	Crystal	001
Beads	5542	6 pcs.	11 mm	Crystal	001
Ceralun Clay	9030/262	1 pkg.		Black	

Supplies: 20 inches – Curb chain Gunmetal
11 – 2" eye pins gunmetal TierraCast® 01-0027-13

1 – Gunmetal Toggle Clasp TierraCast® 94-6154-13
2 – 6 mm jump rings gunmetal TierraCast® 01-0020-13

Non stick surface
Release Balm or oil
Clay Roller

Alcohol wipes
Small circle clay cutters

Instructions

STEP 1: Join Beads; mix Ceralun clay per instructions and roll out a 3/8ths inch thick small sheet. With a 1/2 inch circle cutter, cut out a circle for each Bead shape you want to join. With a smaller circle cutter (drinking straw works perfect and you can find a variety of sizes) cut out a smaller hole in the center of each clay circle.

Continuation on next page

WWW.CREATE-YOUR-STYLE.COM

Necklace “Shadows in the Mist”, page 2

- STEP 2: Place clay ring on one Swarovski Bead art. 5541 15 mm Crystal Lilac Shadow flat end. Join with one Bead art. 5541 15 mm Crystal Lilac Shadow flat end. Gently push together so the two Beads are secure to each other. (Tip: Do not push too firmly or all the Ceralun clay will be forced/pushed inside the form and close up the hole.) Carefully scrape the excess clay off the outside of Beads so it is as even as possible with the Bead surface. You should be left with a clay band.
- STEP 3: Using tweezers or wax stick pick up a Swarovski Round Stone art. 1088 PP21 Crystal Silver Night and push into Ceralun clay band. Continue to add one by one, on the diameter of the clay circle, till it is completely covered. (Tip: When adding Swarovski crystals push into clay only far enough to hold the crystal in place. Do not push completely in until you have gone around the whole Bead and no revisions to spacing need to be made.) Once you are happy with the spacing and alignment push all crystals in far enough to come up and embed completely the girdle of the crystal.
- STEP 4: Using an alcohol wipe clean any residue left behind on the stone by you handling. This needs to be done now. The stone might look clean but once you wipe it up you realize how much residue was left behind. Once the clay cures there will be no way to get off any residue. (Tip: When using black clay be careful not to get any wipe fibers into the clay.) Put aside and let cure undisturbed 24 hours.
- STEP 5: Repeat steps 2 – 4 to join all the Swarovski crystals in the following order.
- 4 sets – Bead art. 5541 15 mm Crystal Lilac Shadow with Bead art. 5542 11 mm and Round Stone art. 1088 PP21 Crystal Lilac Shadow,
 - 2 sets – Bead art. 5541 11 mm Crystal with Bead art. 5541 11 mm Crystal and Round Stone art. 1088 PP21 Crystal Lilac Shadow
 - 2 sets – Bead art. 5541 11 mm Crystal with Bead art. 5542 8mm Crystal and Round Stone art. 1088 PP21 Crystal Silver Night, and
 - 2 sets – Bead art. 5542 8mm Crystal with Bead art. 5542 8mm Crystal and Round Stone art. 1088 PP21 Crystal Silver Night.
- STEP 6: Working with the cured Bead forms take a two inch eye pin through one cured Bead set and make loop to close up side that is open. Repeat the step on all cured Bead sets.
- STEP 7: Link Bead sets together by opening one end of a bead loop and link together with another Bead loop and close loop. Repeat this step until all Beads are linked together in the order you want.
- STEP 8: Using one end of linked strand add half of the chain with jump ring, repeat step on the other side of strand.
- STEP 9: To finish attach one part of your toggle clasp with a jump ring to one of end of chain strand. Repeat step with second part of clasp on the other end of chain.

CREATE
YOUR STYLE

SWAROVSKI



MINI PROJECT INNOVATIONS FALL/WINTER 2014/15

BRACELET TASTE OF SPRING

Materials

Swarovski crystals

Product Group	Article No.	Amount	Size	Color	Color Code
Round Stones	1088	22 pcs.	PP25	Crystal F	001
Flat Backs	2058	8 pcs.	SS20	Dark Moss Green F	260
Sew-on Stones	3700	3 pcs.	6mm	Crystal Volcano	001 VOL
Fancy Stones	4428	18 pcs.	6mm	Crystal Lilac Shadow F	001 LISH
Fancy Stones	4501	8 pcs.	5x2mm	Crystal F	001
Fancy Stones	4678	1 pc.	14mm	Crystal Lilac Shadow F	001 LISH
Cupchains	27104	4 in	PP18	Crystal Golden Shadow F	001 GSHA
Ceralun Clay	9030/262	1 pkg.		Black	

Supplies: 1 - Screw back bezel ornate grande ant gold
1 - Screw back bezel mini circle
1 - Deep Bezel Circle Large No Loop
8 inches of mesh chain
2 - jump rings Antique Brass
4 - head pins Antique Brass
3 - Daisy Bead Caps
1 - Small flower metal stamping

Non stick surface
Release Balm or oil
Clay Roller

1 - Screw back bezel large grande ant gold
1 - Vetri lace 18 circle
1 - Deep Bezel Circle Small No Loop
2 - end caps Antique Brass
1 - Hook Clasp Antique Brass
1 - Sunflower metal stamping
1 - Large Aster metal stamping

Alcohol wipes
Small circle clay cutter
2 part epoxy Glue

Instructions

STEP 1: Fill bezels with Ceralun clay by mixing per instructions. Take small amount of clay and fill the bezel (clay depth can depend based on design).

Continuation on next page

Bracelet "Taste of Spring", page 2

- STEP 2: Using tweezers or wax stick pick up Swarovski crystals and objects to be embedded and start adding one by one until your design is complete. (Tip: When adding crystals and objects push only far enough to hold the stone in place. Do not push completely in until you have completed your design and no revisions need to be made.) Once you are happy with the spacing and alignment push all in far enough to come up and embed completely the girdle of the crystals or object.
- STEP 3: Using alcohol wipe clean any residue on the stones and objects left behind by you handling. This needs to be done now. The stones might look clean but once you wipe it up you realize how much residue was left behind. Once the clay cures there will be no way to get off any residue. (Tip: when using black clay be careful not to get any wipe fibers into the clay.) Put to the side and let cure undisturbed 24 hours.
- STEP 4: Follow steps 1 to 3 to fill 3 bezels
- Bezel 1 Large: Layer the following: Fill large bezel ½ way up with mixed Ceralun clay, center large cup in clay push down slightly, roll out a 3/8 snake of clay fill gap between large bezel and cup, add 14 Fancy Stones art. 4428 6mm around diameter and push firmly into the clay, leave two spots open for 2 flowers, push flowers firmly into the clay, add a small rolled out ball of clay in center of two flowers, add Sew-on Stone art. 3700 6mm Crystal Volcano firmly in clay center of each flower, fill medium cup half full with clay and push small cup into the center of clay, roll out snake of clay to fill gap around the small cup, add Round Stones art. 1088 PP25 Crystal around the diameter, fill the small cup with clay, add Flat Backs art. 2058 SS20 Dark Moss Green around the diameter, add sunflower and flower push all firmly into the clay, roll small ball of clay and add to center of flower and push Sew-on Stone art. 3700 6mm Crystal Volcano firmly into flower.
- Bezel 2 Medium Fill large bezel ½ way up with mixed clay, center large decorative cup in clay push down firmly, Fill large decorative bezel ½ way up with mixed clay, lay Swarovski Cupchain art. 27 104 PP18 Crystal Golden Shadow around the outside diameter of the clay push down firmly, roll out a 1.4 inch thick small sheet of clay cut out a 18mm circle, place clay circle inside the Cupchain circle, push Fancy Stone art. 4678 14mm Crystal Lilac Shadow in center of circle, push crystal down while bringing up the sides of clay past the girdle of crystal and add Fancy Stone art. 4501 5x2mm Crystal around the diameter of Fancy Stone art. 4678 14mm lining up with the straight edges of cut.
- Bezel 3 X-small: Fill large bezel 2/3rds up with mixed clay, center large decorative flower in clay push down firmly, roll small ball of clay and add to center of flower, add last flower pushing firmly into the clay and roll small ball of clay pushing Sew-on Stone art. 3700 6mm Crystal Volcano firmly into flower.
- STEP 5: Cut mesh chain to the desired bracelet length. (Hint: Keep in mind wire mesh will expand some.)
- STEP 6: Secure end cap to wire mesh by placing the wire mesh into the cap and secure by pressing the cap together to clamp down on mesh. Bend the ends into the back of the cap. Using the other end cap repeat step on other side of wire mesh.
- STEP 7: Using jump ring attached one part of the clasp to one end of the bracelet form. Repeat with remaining part of clasp on the other side of form.
- STEP 8: Unscrew the nut completely from the backside of the cured bezel. In desired spot add the bezel by pushing the screw through chain mesh and screw the nut firmly back in place.
- STEP 9: Unscrew the nut a few turns and add a little dab of 2 part-epoxy glue (or ours) on the part you just unscrewed. (Tip: Not too thick as glue can seep out.) Screw back firmly the nut. With heavy duty flush cutters cut off excess screw level to the nut. Using emery board or sand paper file off any jagged edges left behind.
- STEP 10: Continue step 2 – 4 to add remaining bezels.